



## Small Business Customer Energy Pricing Structure:

Below is an explanation of the pricing structure for Natural Gas supply at Go Power

Go Power uses a **Cost-Plus Pricing Model**, which means the price you pay for natural gas is made up of three main parts:

### **Wholesale Cost of Natural Gas**

- This is the price Go Power pays on the wholesale market to purchase natural gas. – This cost changes daily depending on market conditions.

### **Go Power's Fixed Contract Supplier Charge ("Plus")**

- A pre-agreed fixed fee itemised separately on your contract and bills
- This fee covers Go Power's operating costs and services.
- The margin remains fixed for the duration of your contract.

### **Pass-Through Charges**

- These are regulated industry charges that Go Power collects on behalf of network operators and market bodies.
- They are **not set by Go Power** and can change during your contract.
- These charges are passed directly to you at the cost set by the relevant authorities.

## How It All Comes Together:

**Your final Gas price therefore =**

**Wholesale Market Natural Gas Cost + Go Power Contract Supplier Charge + Pass-Through Charges**

This structure ensures transparency by breaking down exactly what you're paying for and where each part of the price comes from.

***\*Please note the Natural Gas element is subject to change on monthly basis***

Please see examples below of bills our customers have received in the different Natural Gas Networks:

## EUC1 METER – PHOENIX Network

## Invoice

Doc. No.  
Doc. Date 30/11/2025  
Acc. Code

SMP  
Meter Serial  
Category/Tariff EUC1 Firm  
Usage Period 1 - 30/11/2025

### Supply Address:

Opening Read 31/10/2025 (E)	5,619	
Closing Read 30/11/2025 (E)	5,782	
Gas used	163	m3
Gas used	1,867	kWh
Calorific Value	39.78	
Correction Factor	1.036299	
Fixed Factor	1	
Factor	3.6	
ECF	11.451104	

Supplier Charge	1,867	kWh	0.0100	£18.67
-----------------	-------	-----	--------	--------

### Energy Charges

Gas Commodity	1,867	kWh	0.026068	£48.67
---------------	-------	-----	----------	--------

### Regulated Charges

Capacity (30 days)	155	kWh	0.002788	£12.97
Commodity	1,867	kWh	0.024209	£45.20

### Sub Total

Reduced Rate VAT @ 5%				£6.28
<b>Total Charges for the Period</b>				<b>£131.79</b>

Period unit rate <b>6.723 p/kwh</b> excl. CCL & VAT
---

## P1 METER – KINECX Network

P1 METER – KINECX Network



Doc. No.  
Doc. Date 30/11/2025 SMP  
Meter :

Acc. Code Category/Tariff P1 Firm  
Usage Period 1 - 30/11/2025

**Supply Address:**

Opening Read 31/10/2025 (E)	139
Closing Read 30/11/2025 (E)	313
Gas used	174 m3
Gas used	1,986 kWh
Calorific Value	39.78
Fixed Factor	1.03295
Factor	3.6
ECF	11.414098

<b>Supplier Charge</b>	1,986 kWh	0.0100	<b>£19.86</b>
------------------------	-----------	--------	---------------

**Energy Charges**

Gas Commodity	1,986 kWh	0.026042	£51.72
---------------	-----------	----------	--------

**Regulated Charges**

Capacity (30 days)	167 kWh	0.002958	£14.83
Commodity	1,986 kWh	0.019151	£38.03

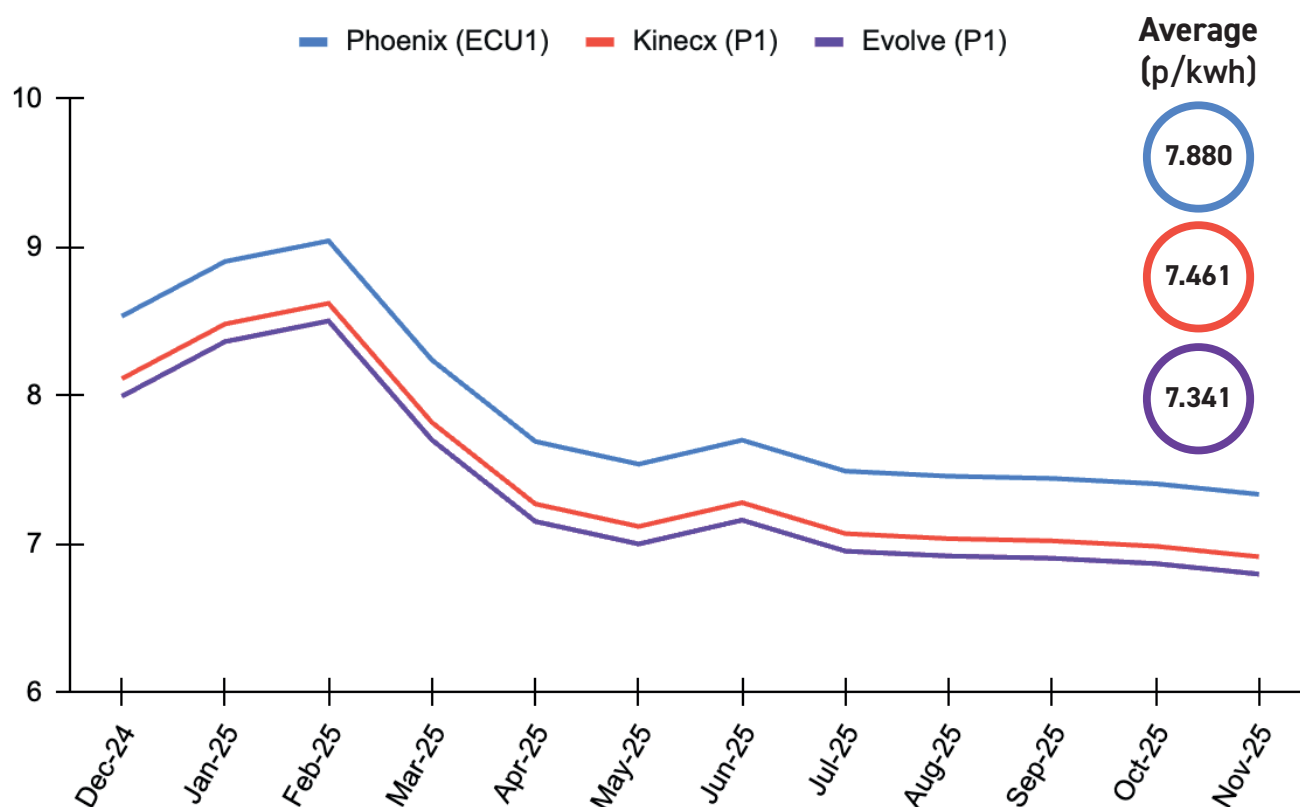
**Sub Total**

Reduced Rate VAT @ 5%			£6.22
-----------------------	--	--	-------

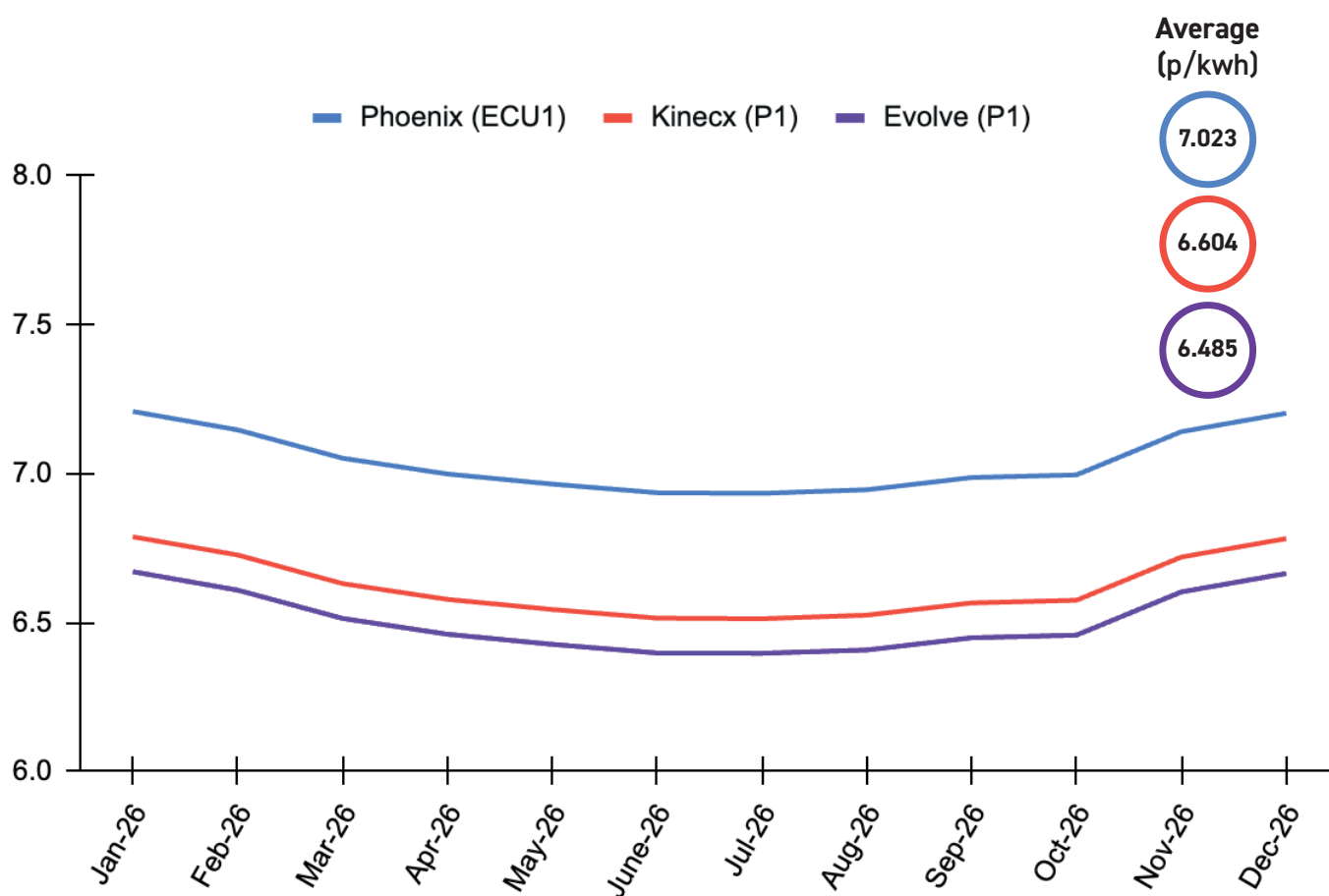
<b>Total Charges for the Period</b>			<b>£130.66</b>
-------------------------------------	--	--	----------------

<b>Period unit rate</b>
<b>6.266 p/kwh</b>
excl. CCL & VAT

Please find below a clear breakdown of the **historical cost plus Gas Tariffs (Excl. VAT & CCL)** to our Small Business Customers on this model: \*forecasted cost based on forward curve as of January 2026

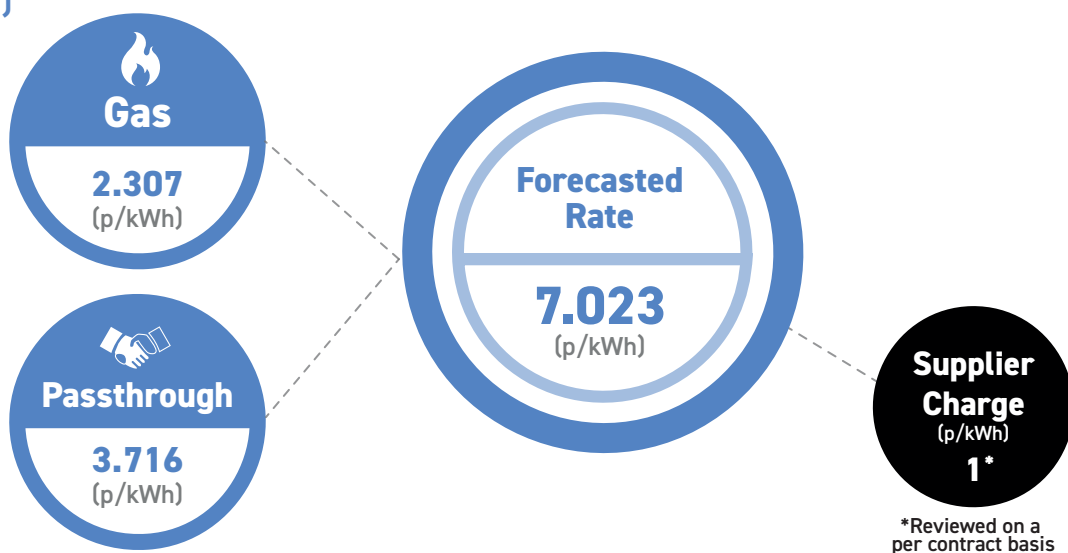


Please find below a clear breakdown of the **Indicative forward cost plus Gas Tariffs (Excl. VAT & CCL)** of natural gas supplied to our Small Business Customers on this model: \*indicative forward cost based on forward curve as of January 2026

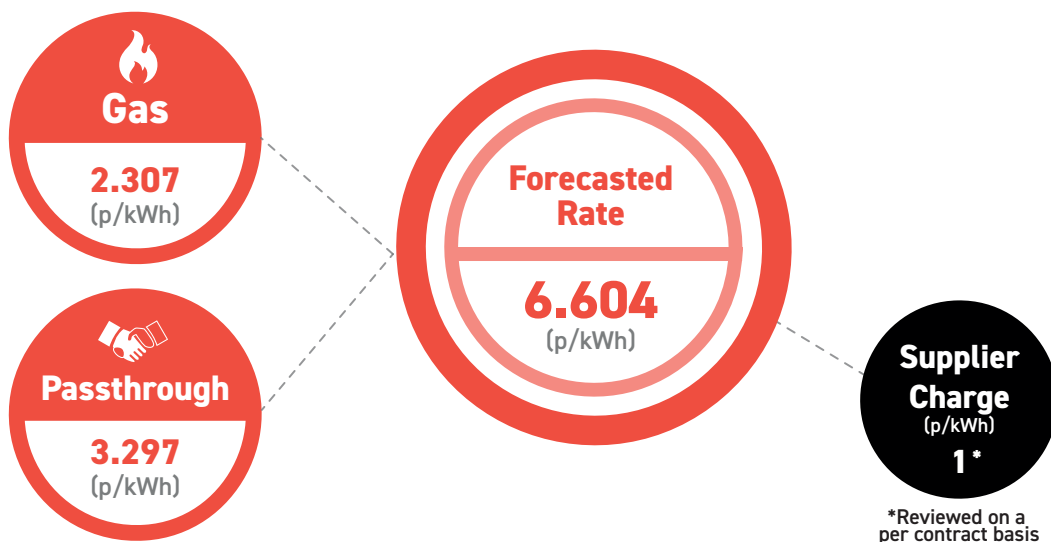


In addition, please find the forecasted cost of natural gas to our Small Business Customers for the next 12 months: **January 2026 - December 2026**

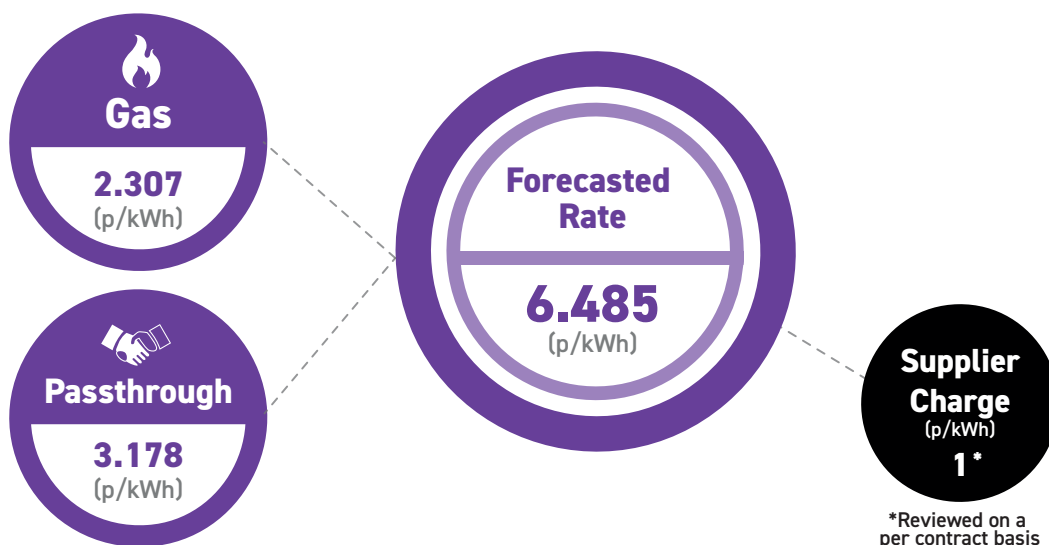
**Phoenix Network (EUC1)**



**Kinecx Network (P1)**



**Evolve Network (P1)**



## Other costs to consider as a Small Business Customer:

### Climate Change Levy (CCL)

The Climate Change Levy (CCL) is a government-set environmental tax applied to natural gas supplied to non-domestic customers in Northern Ireland. It is charged per unit of natural gas charged.

Some customers may qualify for partial or full relief from CCL, including charities and businesses covered by Climate Change Agreements (CCAs).

Customers who use less than 4,397 kWhs per month are not required to pay CCL.

### Value Added Tax (VAT)

VAT is a government-set tax applied to natural gas supplied to non-domestic customers in Northern Ireland but the rate you pay depend on how your natural gas is used.

- **5% VAT** – applies to customers that uses less than 4,397kWhs or use the natural gas for certain styles of charitable, non-business use.
- **20% VAT (standard rate)** - applies to most businesses for natural supplies where reduced-rate eligibility does not apply.

### VAT Reliefs and Reduced Rates:

Eligibility and application rules are set out by HMRC in VAT Notice 701/19: **Fuel and Power**, available on the GOV. UK website.

### Security Deposits

Go Power reviews supply contracts to determine whether a security deposit is required. This assessment may include, but is not limited to, your company's credit rating, nature of business and wider economic factors.

If a security deposit is required, it will be calculated based on the estimated cost of gas for an average three-month period for your type of business.

Go Power reserves the right to request additional security at any time during the Agreement if we believe your creditworthiness has deteriorated, or if any direct debit payment is returned or refused.

Any remaining balance of a security deposit or additional security will be refunded when your account is closed, provided all outstanding amounts owed to Go Power have been fully paid.

If your contract ends and there is an outstanding balance on your account, we may use the deposit to reduce or clear the debt.

Unless advised otherwise, deposits must be paid within 7 days of request. Failure to pay may result in your contract being cancelled and your gas supply being discontinued.

Security deposits are held in accordance with our Energy Supply Commercial General Terms & Conditions (Gas) which you can read here: <https://gopower.co.uk/getattachment/More-Information/Documents-Forms/Document-Accordion-2/Energy-Supply-Commercial-Terms-and-Conditions-GAS.pdf.aspx>

